

IDENTIFICATION OF POISON SIGNS

I. INDIVIDUAL LEVEL





it is easy to assume poisoning in
mass mortality by a carrion

But generally speaking the worst poison is
the daily dripping of vultures, one by one,
scattered and going unnoticed

WHAT
THE
CORPSE POSTURE
CAN TELL

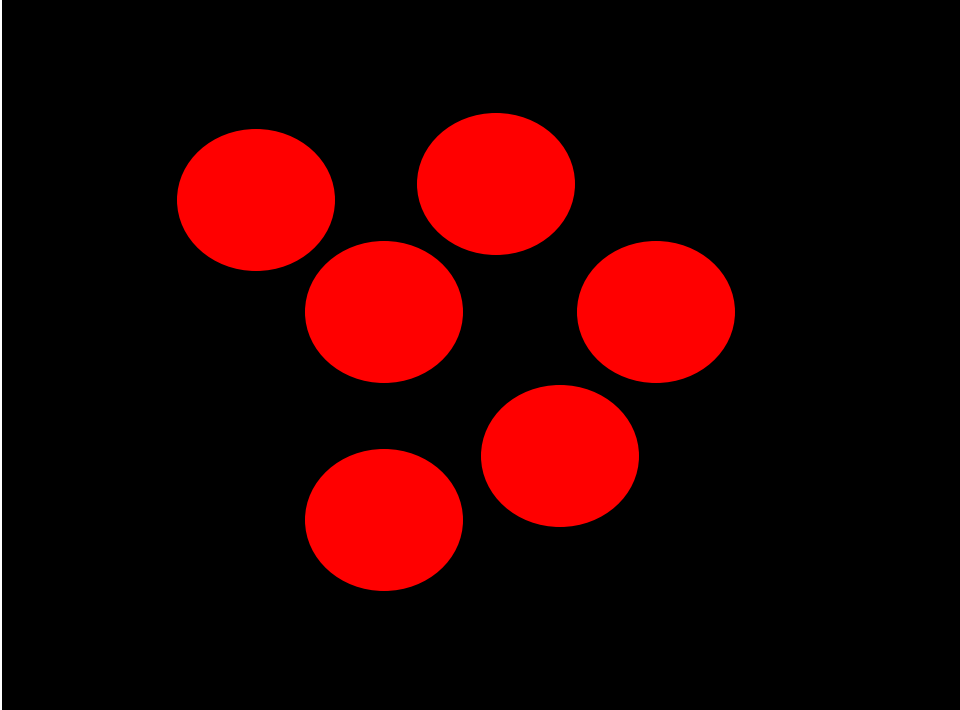


Tele-poison

Poison





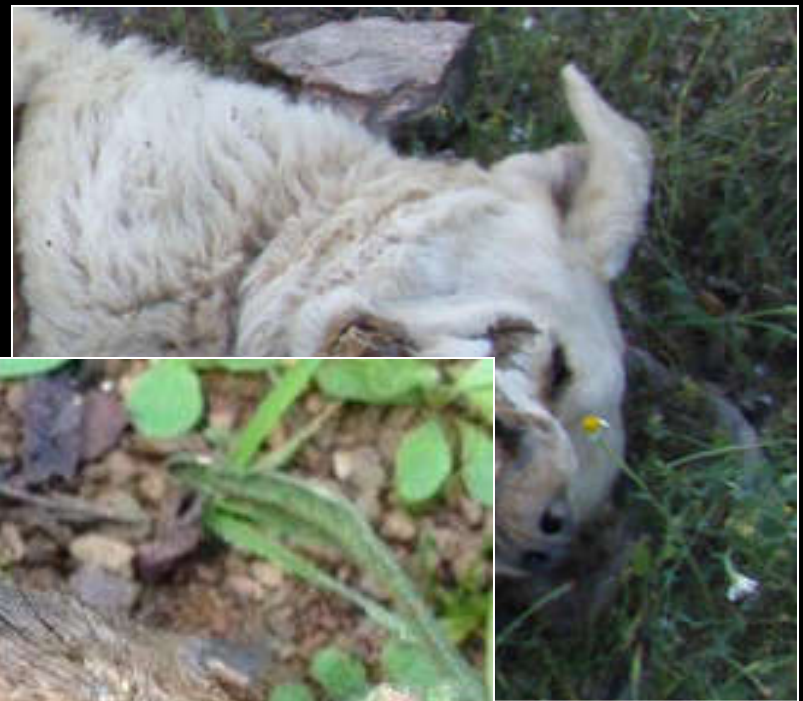


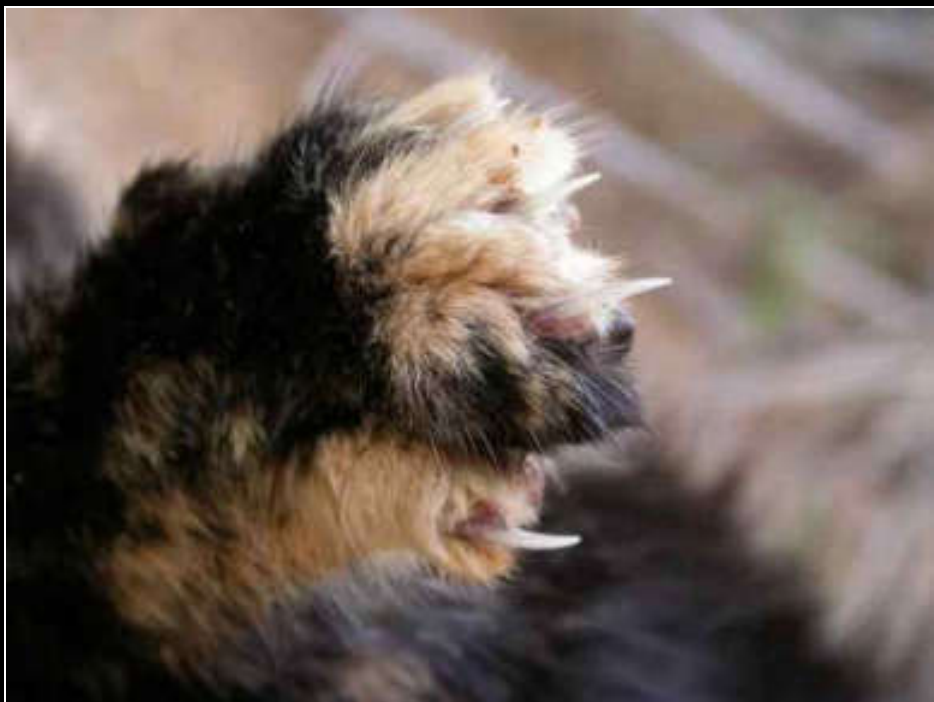
Not in raptors!





The so-called **sardonic grin** in long-snouted carnivores



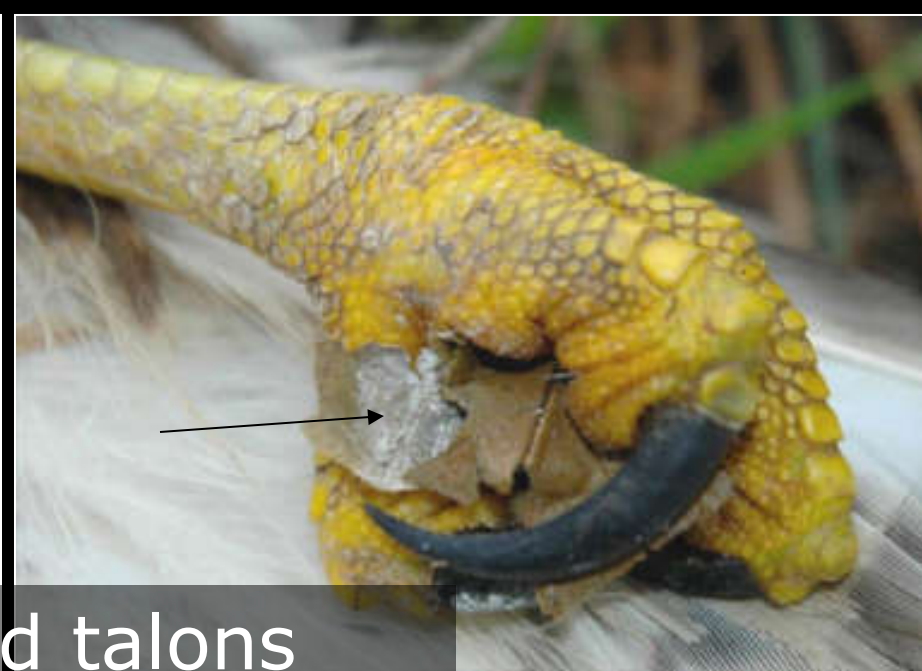






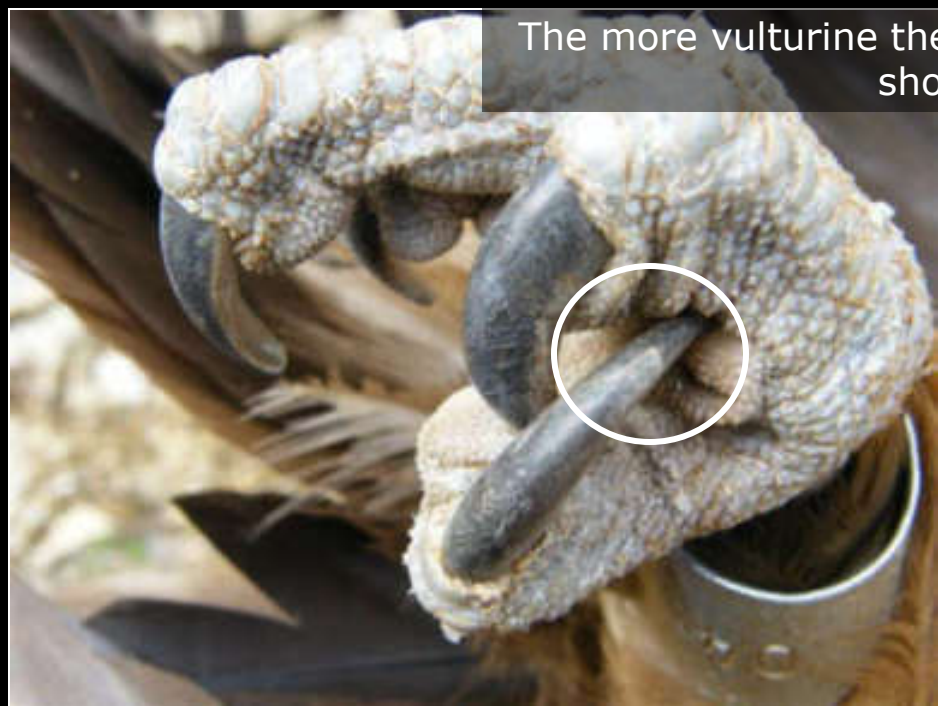
vomits





Clenched talons

The more vulturine the species is, the less is shown





iiNO!!



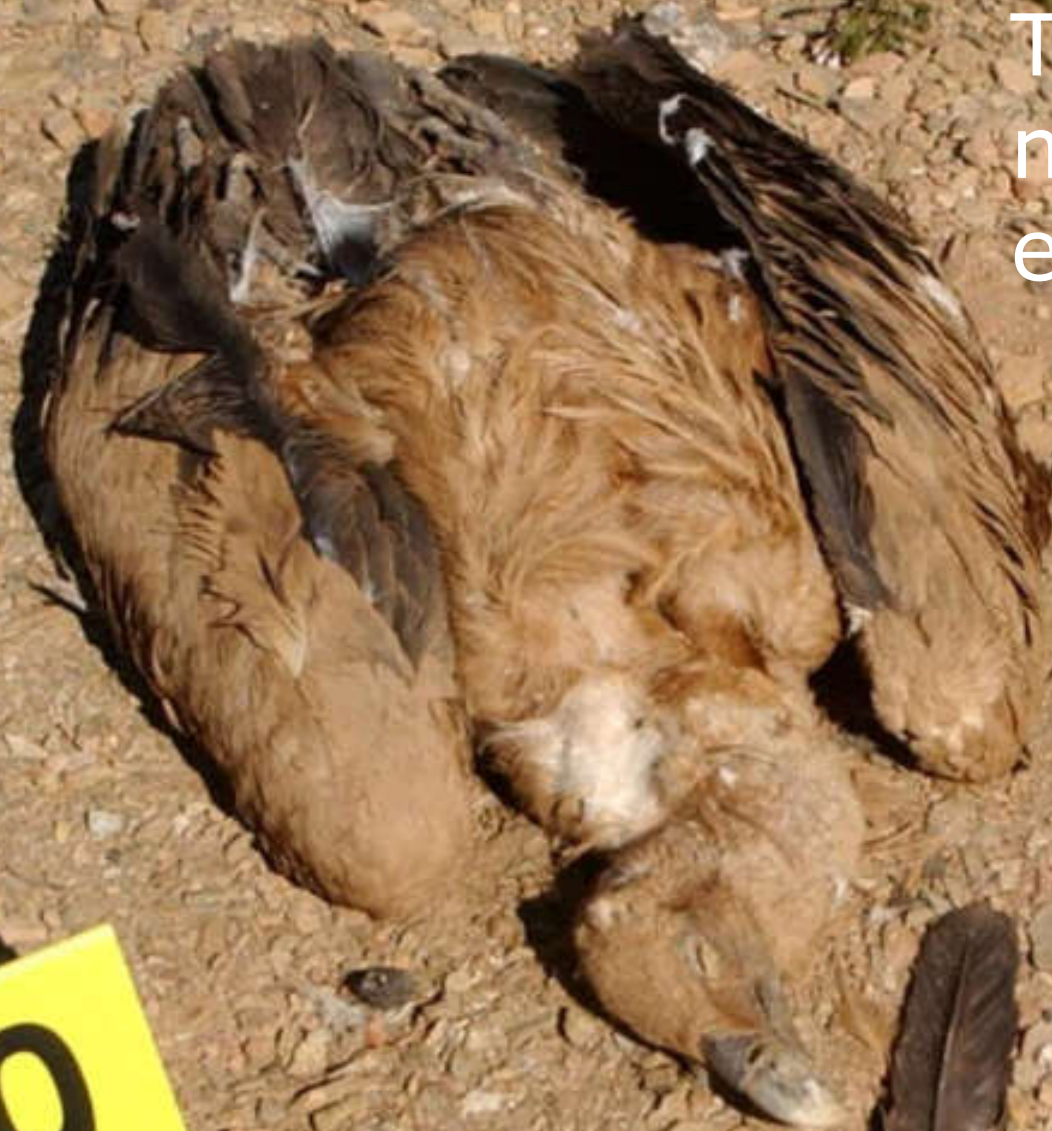




POLYDIPSIA
(excessive thirst)

Obviously only if delayed
death, OPs

The one in a
million
exception



Thanks for your
attention!

