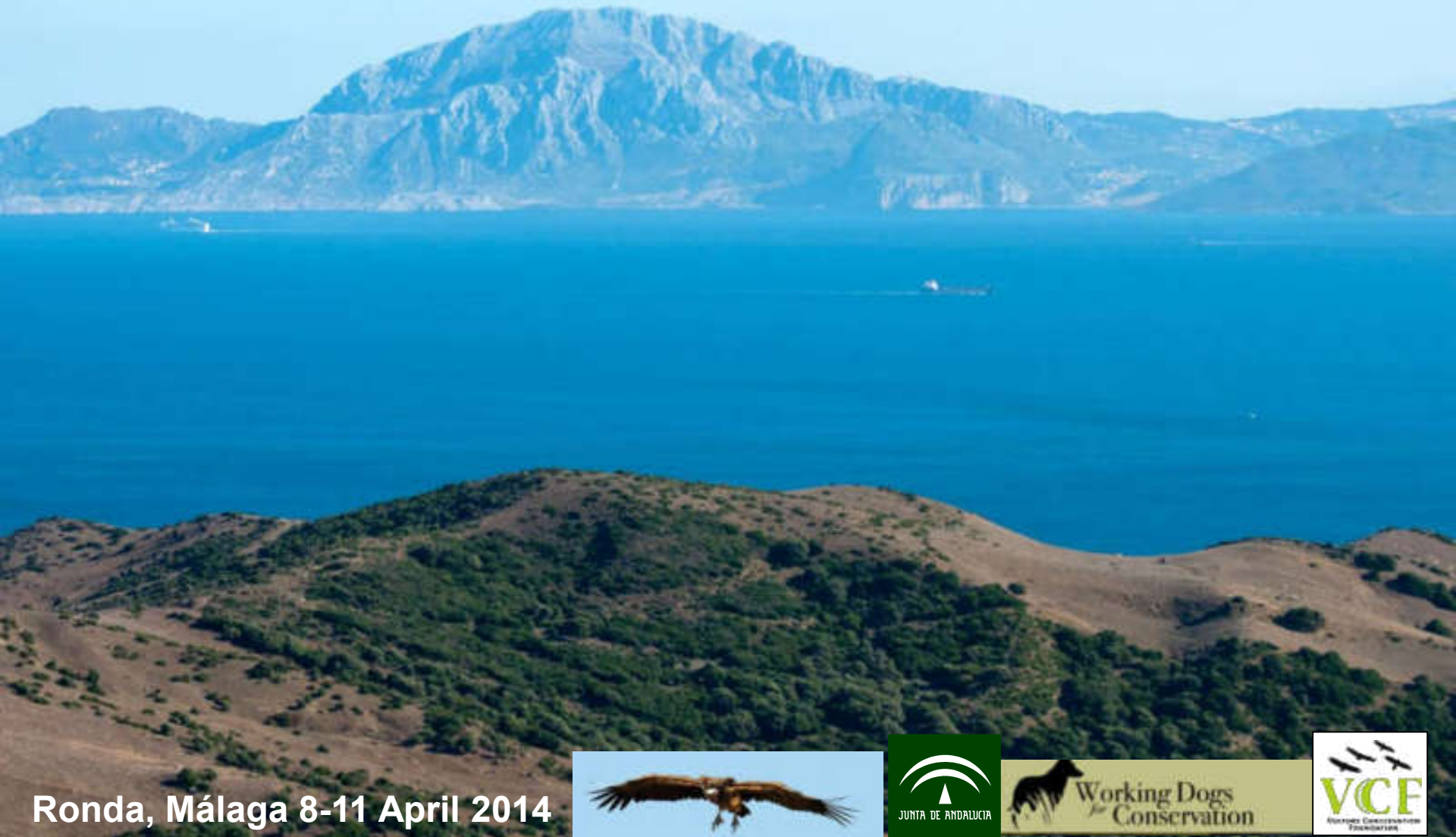


INTERNATIONAL WORKSHOP ON POISONING AND VULTURES IN ÁFRICA-ANDALUCÍA



Ronda, Málaga 8-11 April 2014





Dogs possess a superb sense of smell.
They have roughly 125-220 million olfactory sensory cells.
We have about 5 million.





WDC is based in Montana, USA
with a satellite office in California



A woman with long, wavy brown hair and glasses is holding a black dog. The dog is wearing an orange vest with a circular logo. The background is a blurred outdoor setting.

Alice Whitelaw
Director of Programs

Photo by: Kurt Wilson

A woman with short blonde hair and sunglasses on her head is looking at a brown dog. The dog is wearing a red vest with a circular logo. They are outdoors in a grassy area.

Megan Parker
Director of Research

Photo: Kathy Milani, HSUS

A woman in a green t-shirt is standing in front of a crowd of people. She is holding leashes for three dogs: a black dog, a white dog, and a black and white dog. They are outdoors on a dirt path.

Ngaio Richards
Canine Field Specialist

A woman with long blonde hair is smiling in front of a lake and mountains. She is wearing a green jacket and has sunglasses hanging from her neck.

Deborah Smith
Director of Conservation

A woman wearing a cap, a blue shirt, a green vest, and a backpack is standing on a grassy hill. She is holding a small object in her hands. Mountains and a lake are in the background.

Aimee Hurt
Director of Operations



Pepin



Tsavo RIP

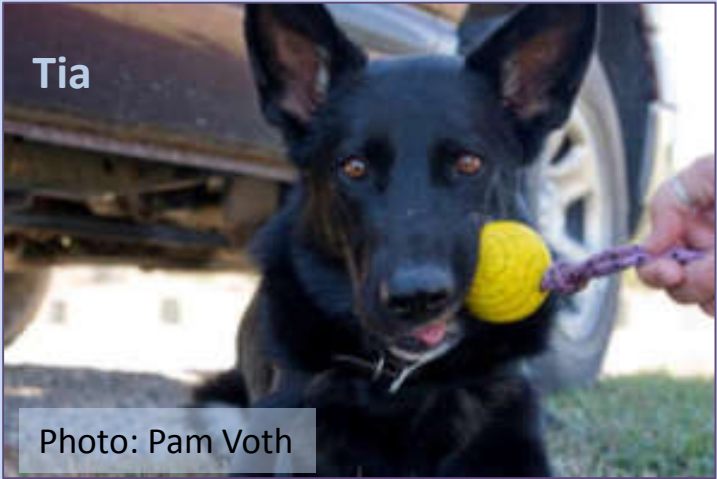


Photo: Pam Voth



Lily



Seamus

Photo: Elizabeth Stone



Wicket



Orbee

Photo: Pam Voth

What we look for

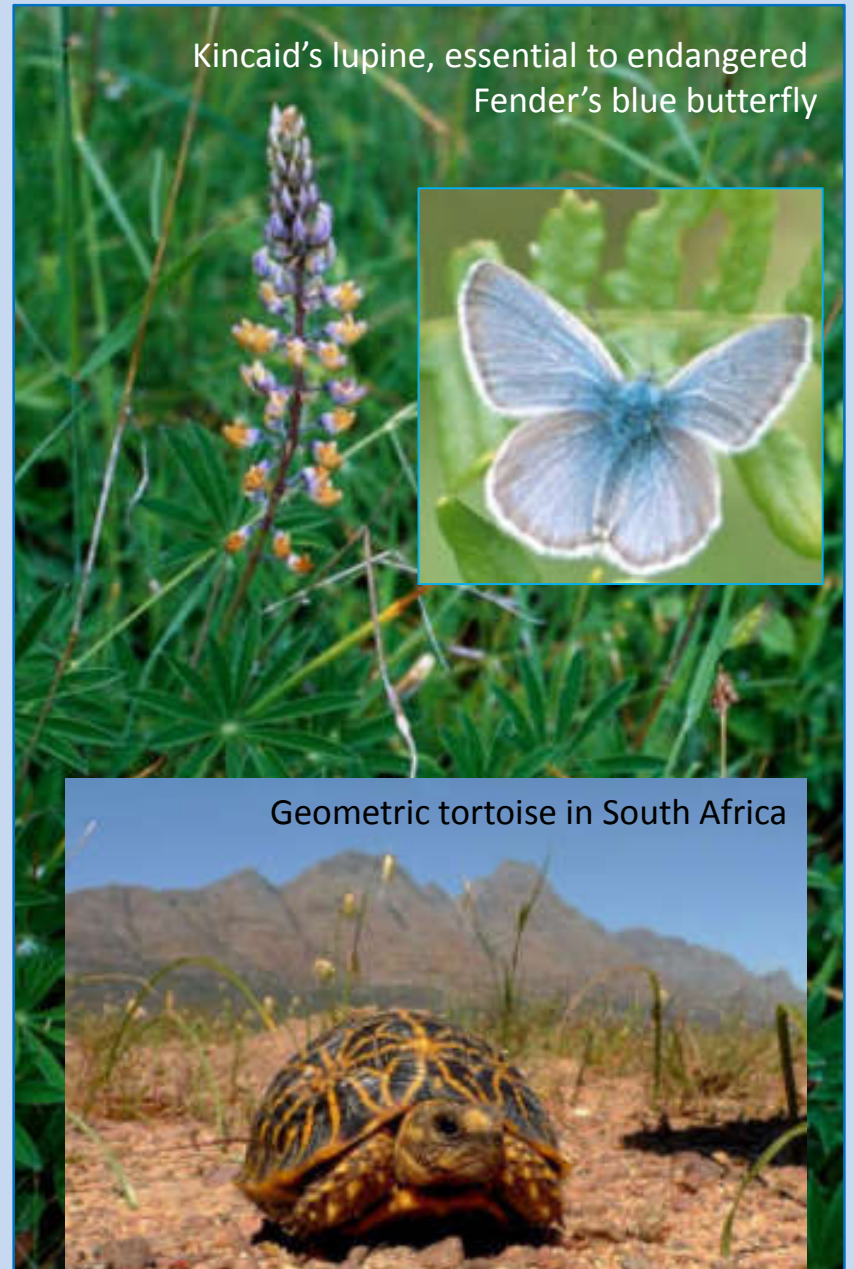
- Animal fecal matter (scat):
for DNA, diet and contaminants analyses
- Live animals (e.g., tortoises, snakes)
- Invasive plants and insects
- Threatened plants and, sometimes indirectly, the species that depend on them
- Snares, bushmeat, contraband



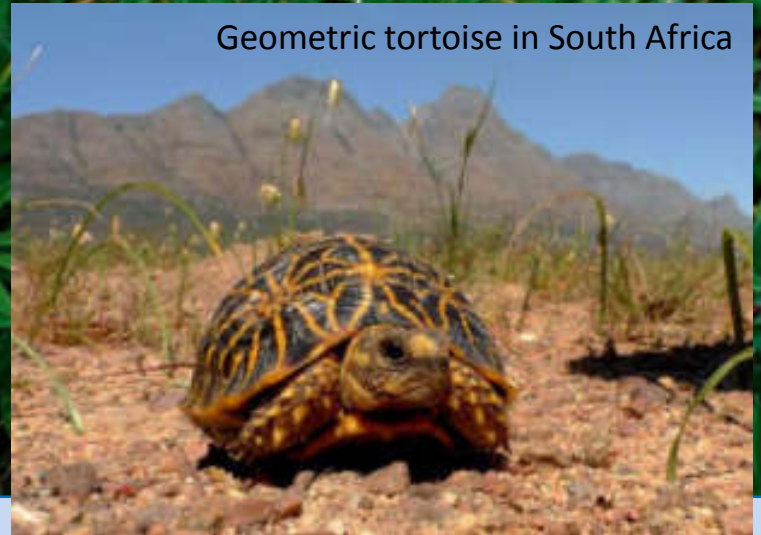
Bear scat in arctic Alaska



Kincaid's lupine, essential to endangered
Fender's blue butterfly



Geometric tortoise in South Africa

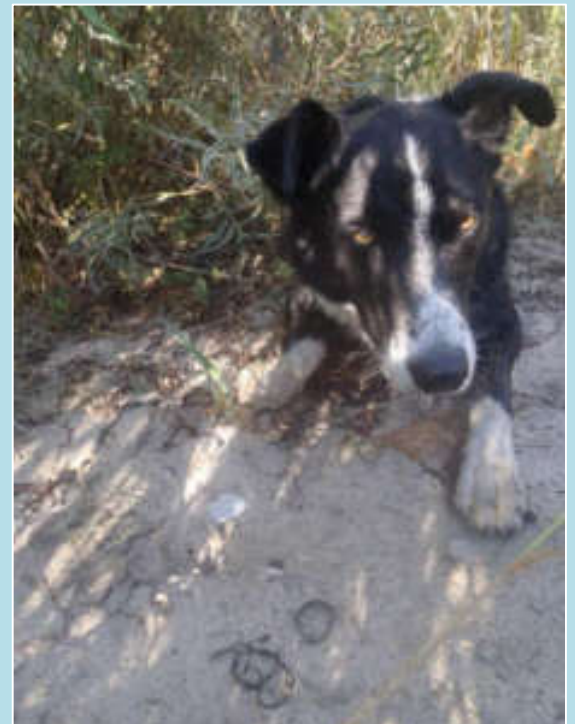


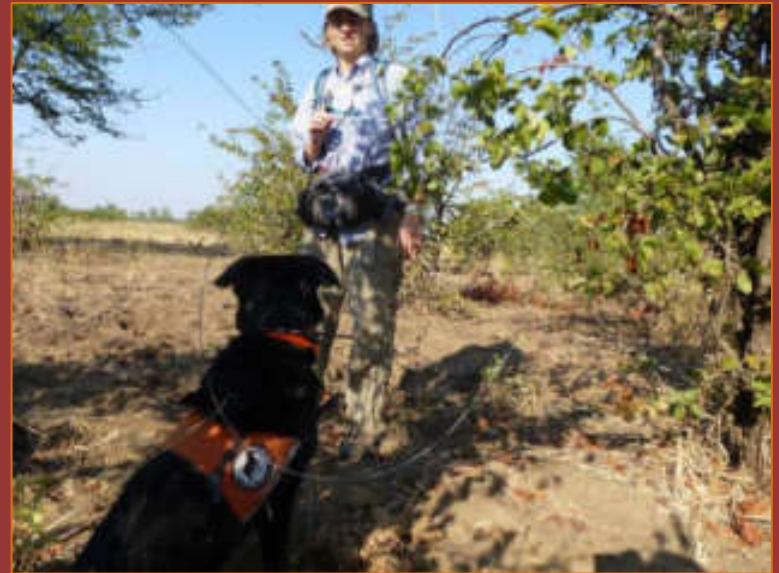
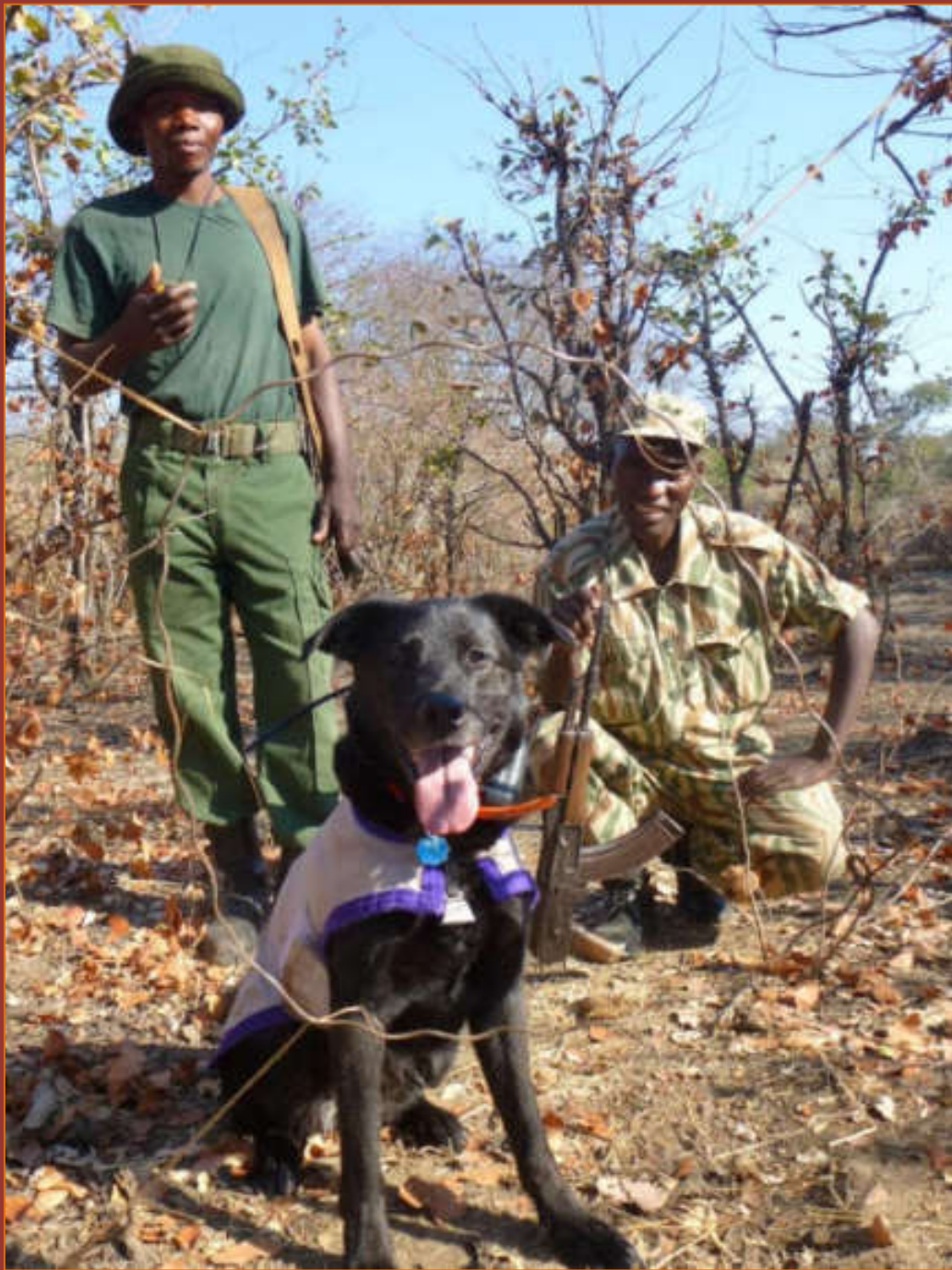
Highly invasive emerald ash borer beetle

**Monitoring environmental
contaminants in
freshwater sentinel species**



Photo: ThomasLeePhoto.com







This is how a dog-handler team thoroughly covers their search area



Refined detail searches are also conducted
Here, Alice and Tsavo are looking for invasive rosy wolf snail in Hawaii



Only a select number of dogs possess the traits needed for this type of detection work



Conservation dogs are in a class of their own...



- Non-instinctual targets
- Low prey-drive, moderate nerve strength
- Long duty cycles

- Simultaneously search for multiple targets
- Variable reward opportunity
- Seek many targets over career



They are all toy-obsessed and work for their reward



Photo: Julie Larsen Maher

The dogs indicate a find by passively alerting = sitting (somewhat) quietly



Photo: Nancie Battaglia



We never seem to get the toy out quickly enough for them!

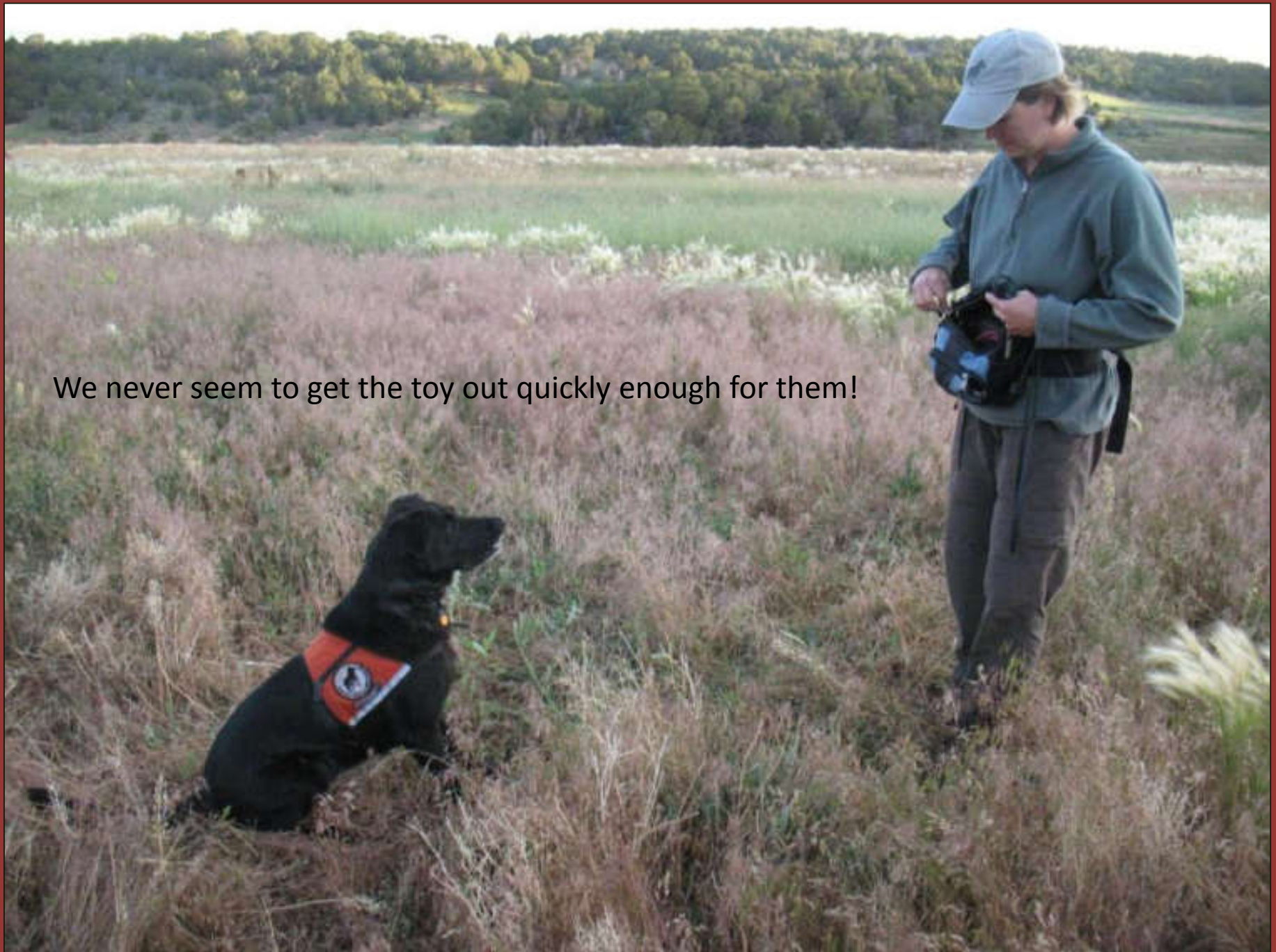
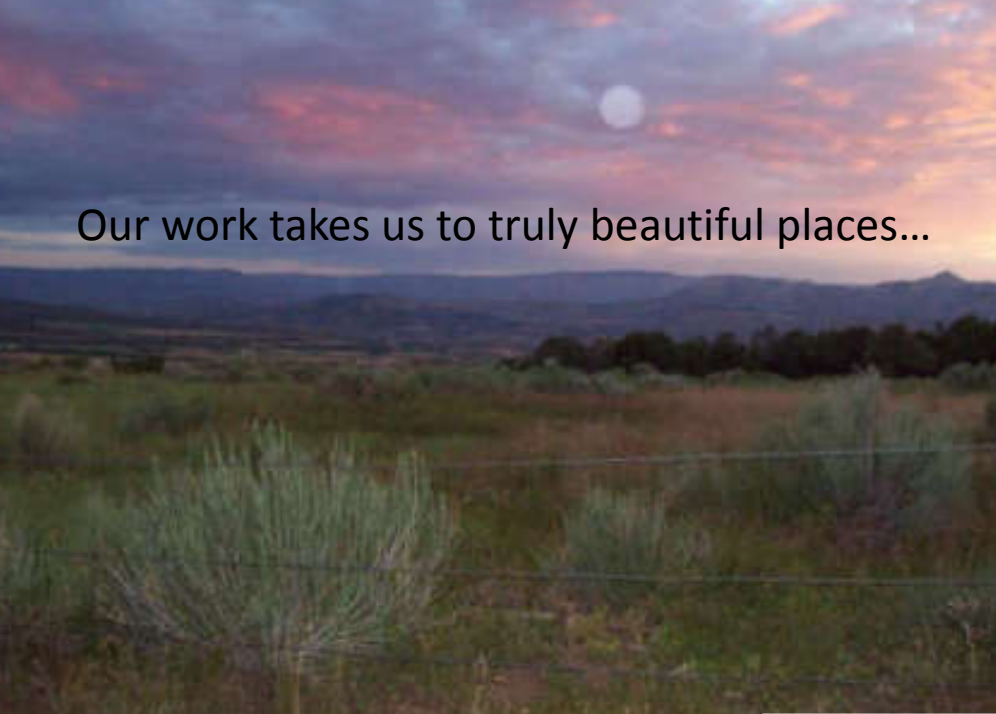




Photo: Pam Voth

It's rewarding for us too.

Our work takes us to truly beautiful places...



...all over the world

Photo: Dave Hamman

Many where few have ventured before



Photo: Bryan Peterson

Ambassadors for Conservation



Photo: Simon Hedges



Dogs provide a unique context for engaging about conservation. Sometimes ours are the first ones people have ever touched or interacted with. They always leave a lasting impression!



All our dogs live with us, their handlers

...they are an essential part of our lives



A black dog is sitting in a lush green field, holding a bright yellow ball in its mouth. The dog is looking towards the camera. In the background, there is a dense forest of evergreen trees, and further back, a range of mountains under a cloudy sky.

**We are proud to partner with these exuberant dogs
to efficiently and noninvasively address
the most pressing conservation issues today.**

www.workingdogsforconservation.org
info@workingdogsforconservation.org